



Aitken
Scientific

A-S Automate



Software development
for science and technology

A-S Automate

- robust, comprehensive control

A-S Automate is the user-friendly software tool that gives you complete control.

Whether you are operating complex testing instrumentation in a laboratory, or running automated machinery on a production line, A-S Automate enables you to streamline your work processes and enhance your productivity.

Efficient

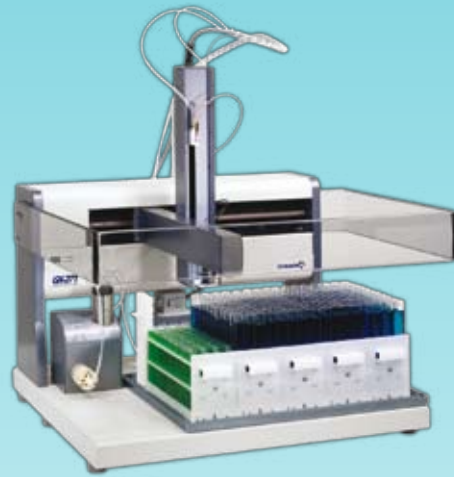
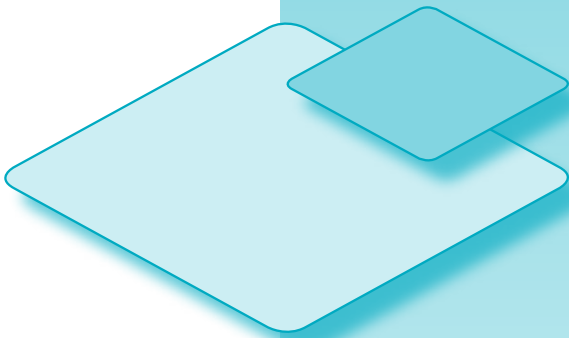
Using A-S Automate, you can:

- capture and process data from many sources (balances, plate readers, bar-code scanners etc)
- control a wide range of equipment (including robotic arms, pumps, valves and other liquid-handling components).

A-S Automate removes the need for custom software for individual automated systems. It will control several instruments or machines from one location, providing sequencing and scheduling of all the equipment. This extremely reliable system provides fully automated control, 24 hours a day.

It also provides status information and comprehensive error handling and reporting – with automatic notification of events via onscreen prompts, email or SMS texts.





Flexible

Setting up the system is simple and user-friendly. A-S Automate is fully programmable and tasks can be edited using a 'drag-and-drop' graphical system. The software can be configured to match your requirements exactly: hardware drivers are available to control a wide range of existing instruments, and new drivers can be created for new devices and added as required. It also has the ability to monitor events and react accordingly.

Integrated

There's no need to re-invest in a new control system: A-S Automate is designed to work with your existing software. It provides integrated support for other packages, including:

- Microsoft applications such as Excel and Word
- Third party instrument control systems
- Data Management Systems including Microsoft Access, SQL Server and Laboratory Information Management Systems.

Effective

A-S Automate is a cost-effective method of integrating high-performance automated processes. You can maximise each instrument's productivity as well as enhancing the power and functionality of your existing software. This gives you a reliable, robust system which enables you to achieve greater efficiencies and increase the return on your capital investment. A-S Automate has already proved invaluable in a range of industry sectors.

In addition we have developed specialised applications for:

- the pharmaceutical industry
- software compliance with GAMP and 21 CFR Part 11 regulations
- instrument manufacture (including the medical device industry)
- laboratories (including environmental, food and clinical testing laboratories).



Software development
for science and technology



Aitken
Scientific



About us

At Aitken Scientific we have extensive experience in software development for science and technology. We have an international reputation for providing high-quality, cost-effective software solutions for customers in a wide range of industries including pharmaceuticals, engineering, scientific research, instrumentation and computing.



When Deerac Fluidics needed an Automation Control Package to provide an easy-to-use interface for our Equator and Stacker instrumentation, Aitken Scientific were the obvious choice. We had worked with Aitken previously and know that their experience working in life sciences with pharmaceutical companies would prove invaluable.

This project was challenging as we required several other instruments such as third-party liquid handlers, barcode readers and plate readers to be controlled by the same piece of software – creating a completely integrated workstation.

As before we worked closely with the dedicated Aitken team – more as development partners than client and supplier. We are delighted with the completed software which is now part of our product portfolio. We have a great working relationship with Aitken and look forward to continuing our association with them.

Philip Hassell, Head of Research and Development, Deerac



Aitken Scientific Ltd

Oxford House
Oxford Road
Thame
Oxfordshire OX9 2AH
UK

T: +44 (0)1844 214773

F: +44 (0)1844 215022

E: info@aitken-sci.com

www.aitken-sci.com